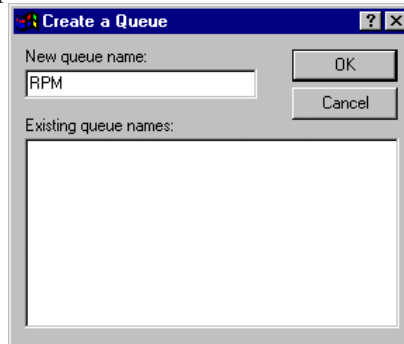


# AS/400 Setup Instructions

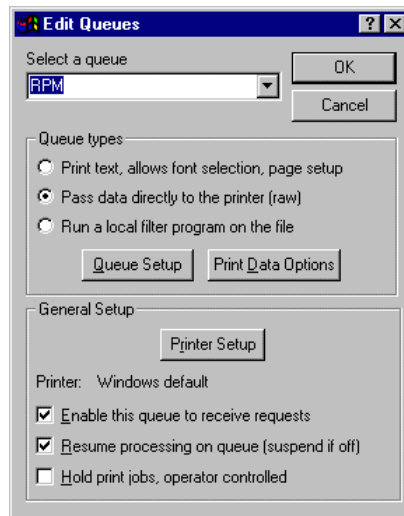
These instructions help configure an IBM AS/400 to successfully send data to RPM Remote Print Manager®. For these instructions, RPM has already been installed on a PC with an IP address of 192.168.1.35. Contact your system administrator for information specific to your network.

## Creating a Queue in RPM

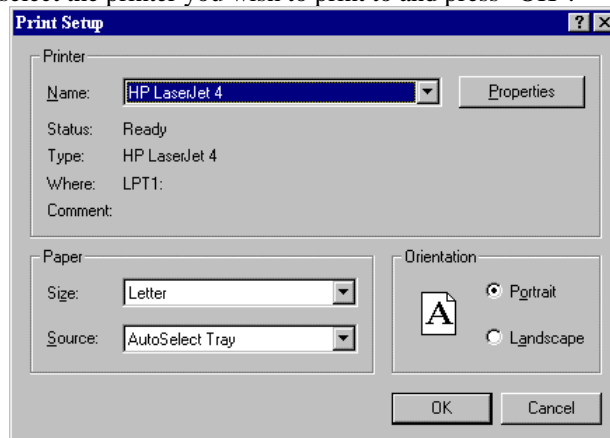
1. Choose “New Queue...” from the “Queues” menu in RPM.
2. Type the name of the queue you wish to create. You will later configure the AS/400 OUTQ to send print jobs to this queue name. I will use “RPM”. Now press “OK”.



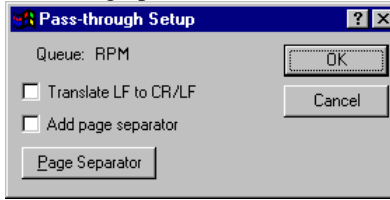
3. In the “Edit Queues” dialog, choose the second queue type: "Pass data directly to the printer (raw)". Now press the “Printer Setup” button.



4. In the “Print Setup” dialog, select the printer you wish to print to and press “OK”.



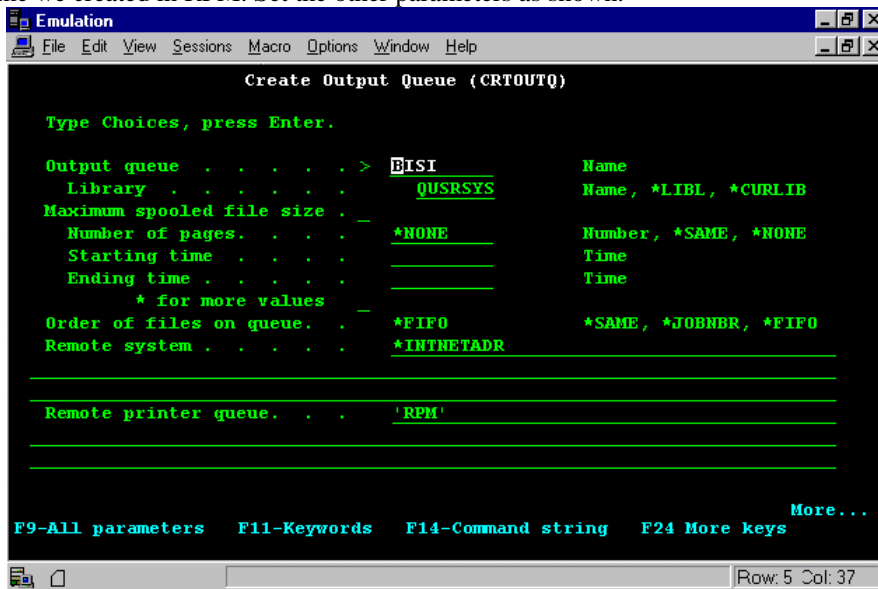
5. In the “Pass-through Setup” choose the following options:



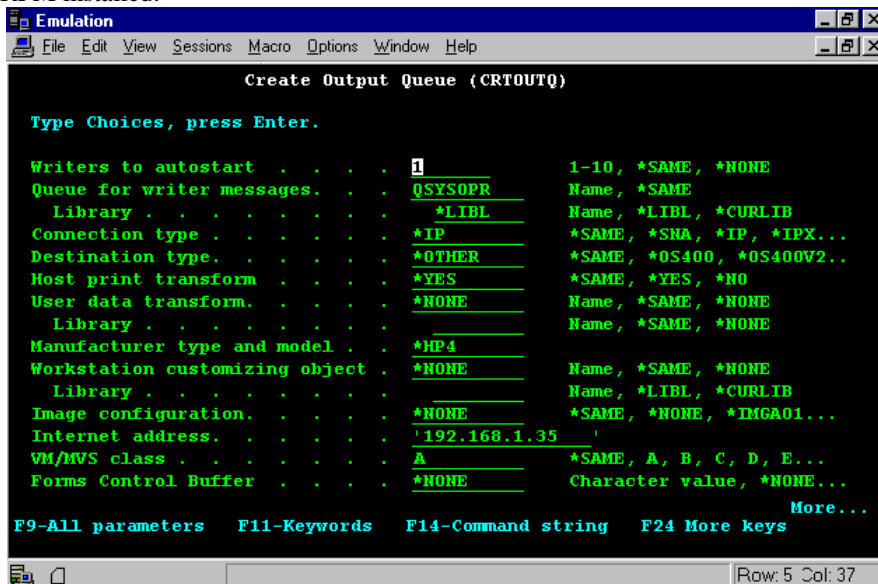
Press “OK” on the “Pass-through Setup” dialog and “OK” on the "Edit Queues" dialog to apply changes. You are now ready to start configuring a remote OUTQ on the AS/400.

## Creating a remote OUTQ on the AS/400

1. From the AS/400 command prompt, issue the command CRTOUTQ and press F4 (NOT “Enter”) to prompt. Now press F24 (Shift+F12), then F9 to display all parameters.
2. The first parameter is the name of the OUTQ you wish to create. This name does not have to be, but can be, the same as the queue name we created in RPM. Set the other parameters as shown.

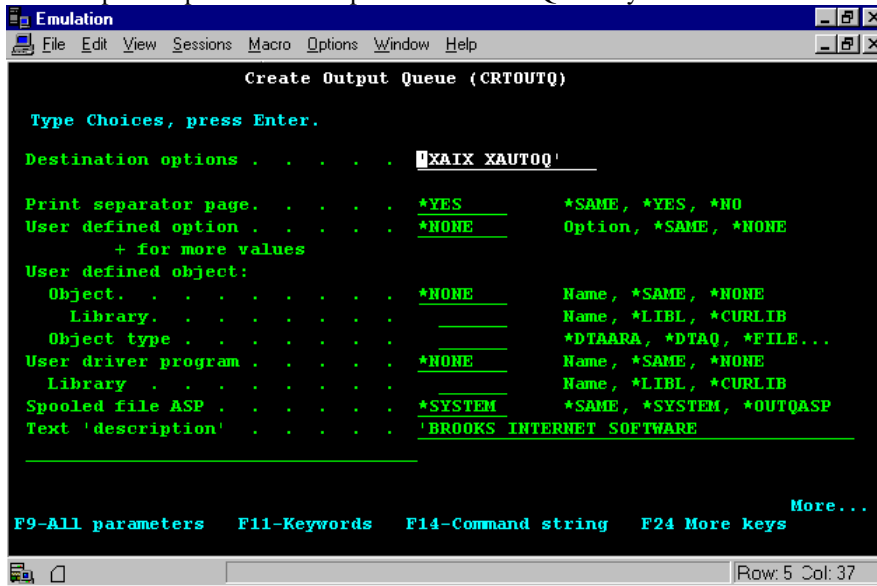


3. The second screen should have the following parameters set. The "Internet address" parameter will be the IP address of the PC that has RPM installed.

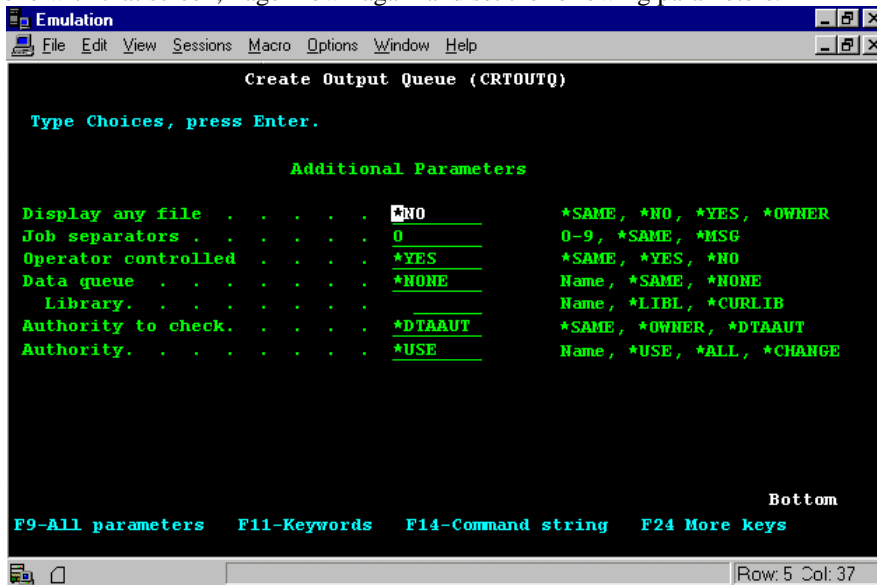


- When all of these parameters are set correctly, press the Page-Down button to view the next screen. It should have the parameters set as follows.

**Note:** The "Destination options" parameter is important. 'XAUTOQ' is only available in OS/400 V3R7 or later.



- When you are done with that screen, Page-Down again and set the following parameters.



**Congratulations.** Your AS/400 is now configured to print through RPM.